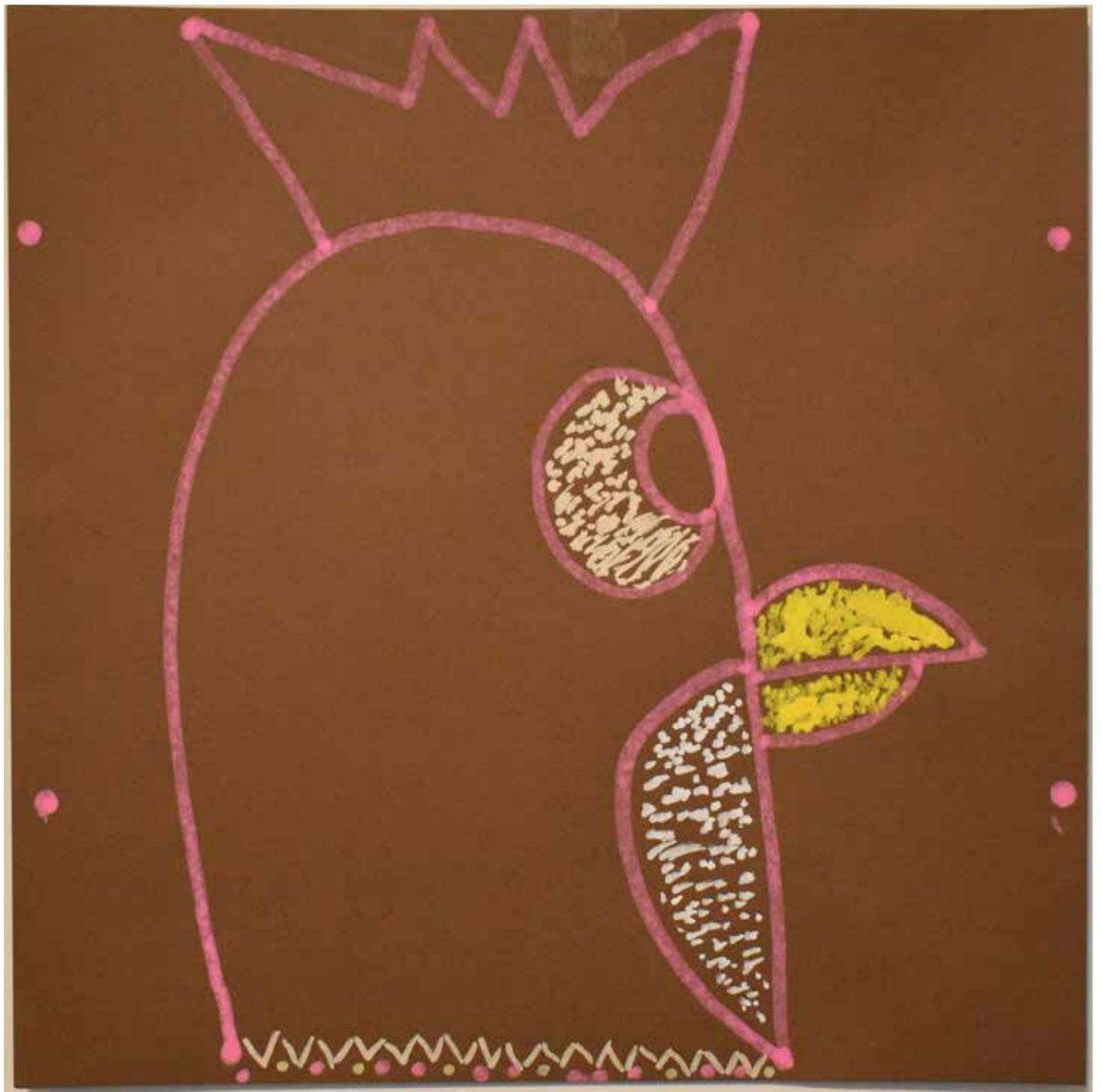


6 e 7 febbraio 2024
Percorsi di design
con Luca Boscardin
/ puzzle

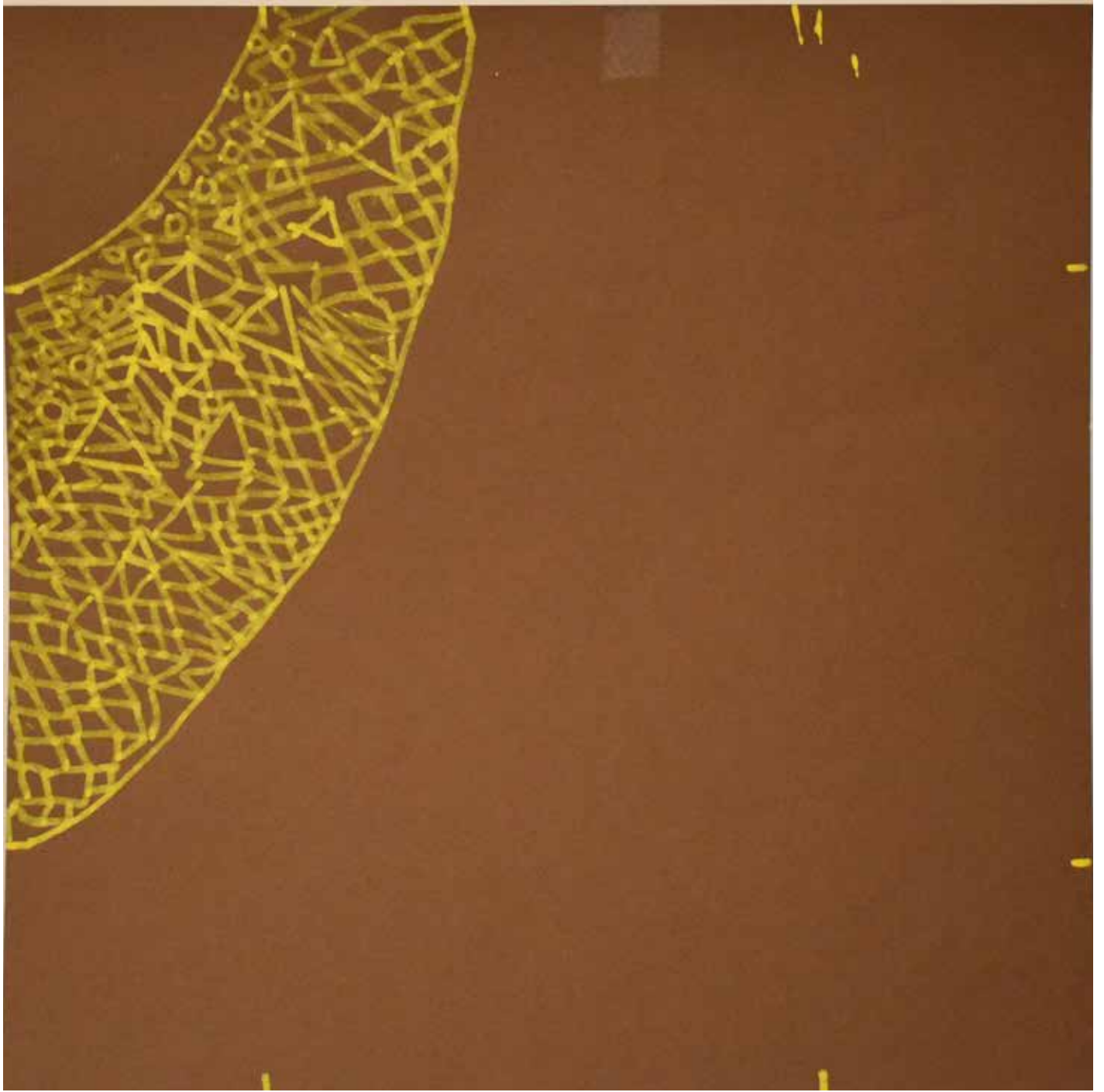
IC Val Tagliamento - Ampezzo (UD)
IC Linussio Matiz - Paluzza (UD)







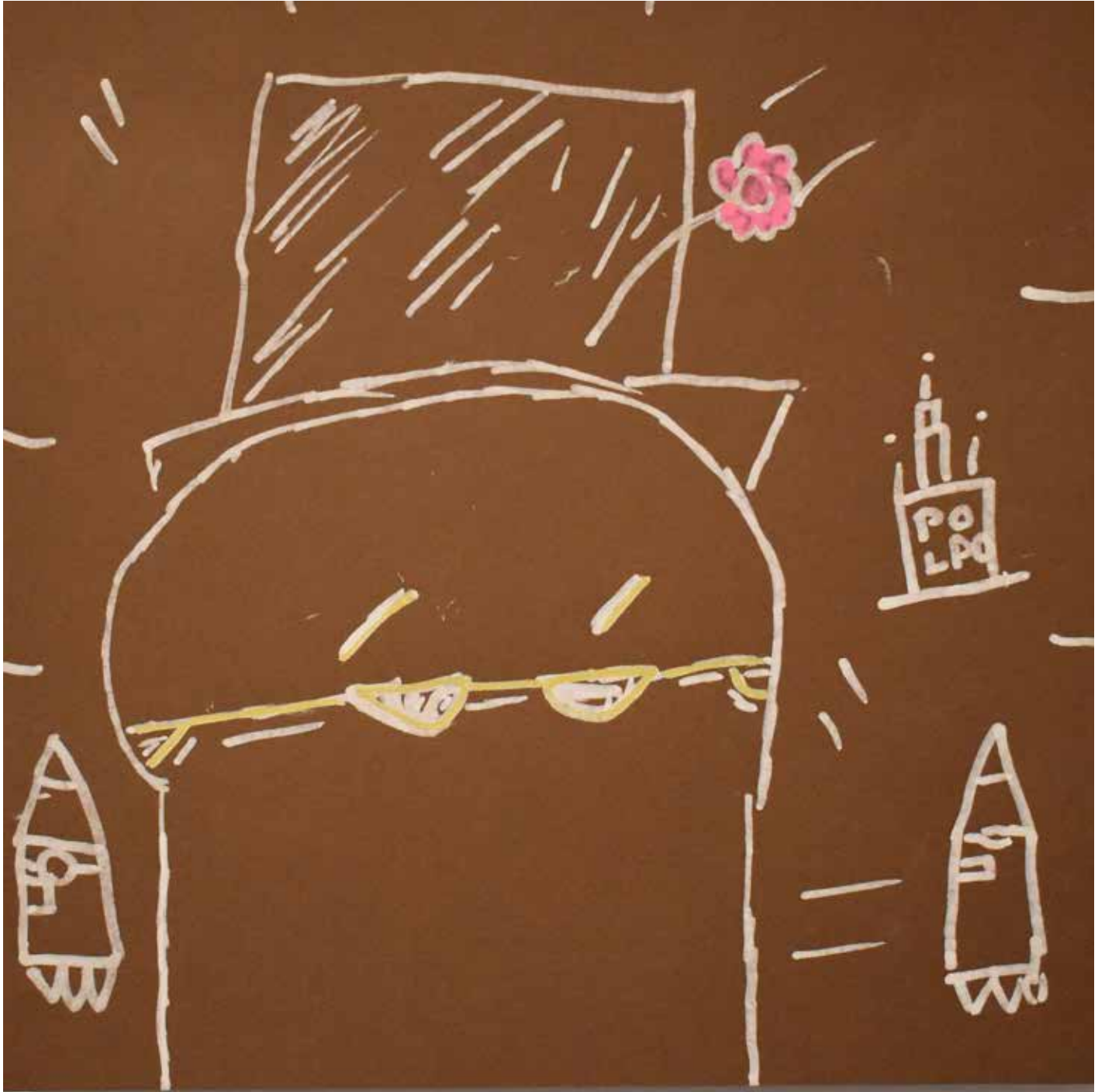








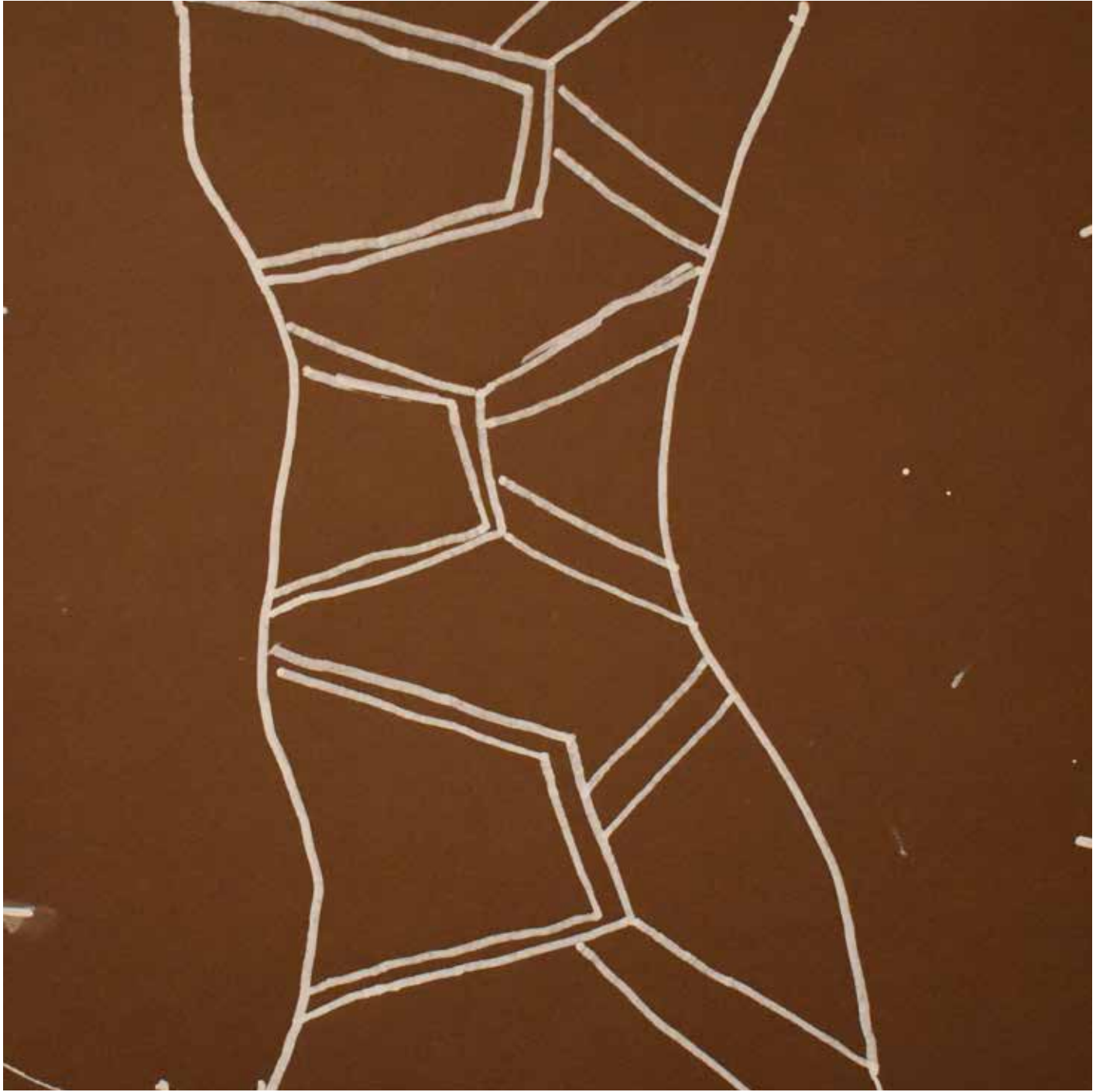


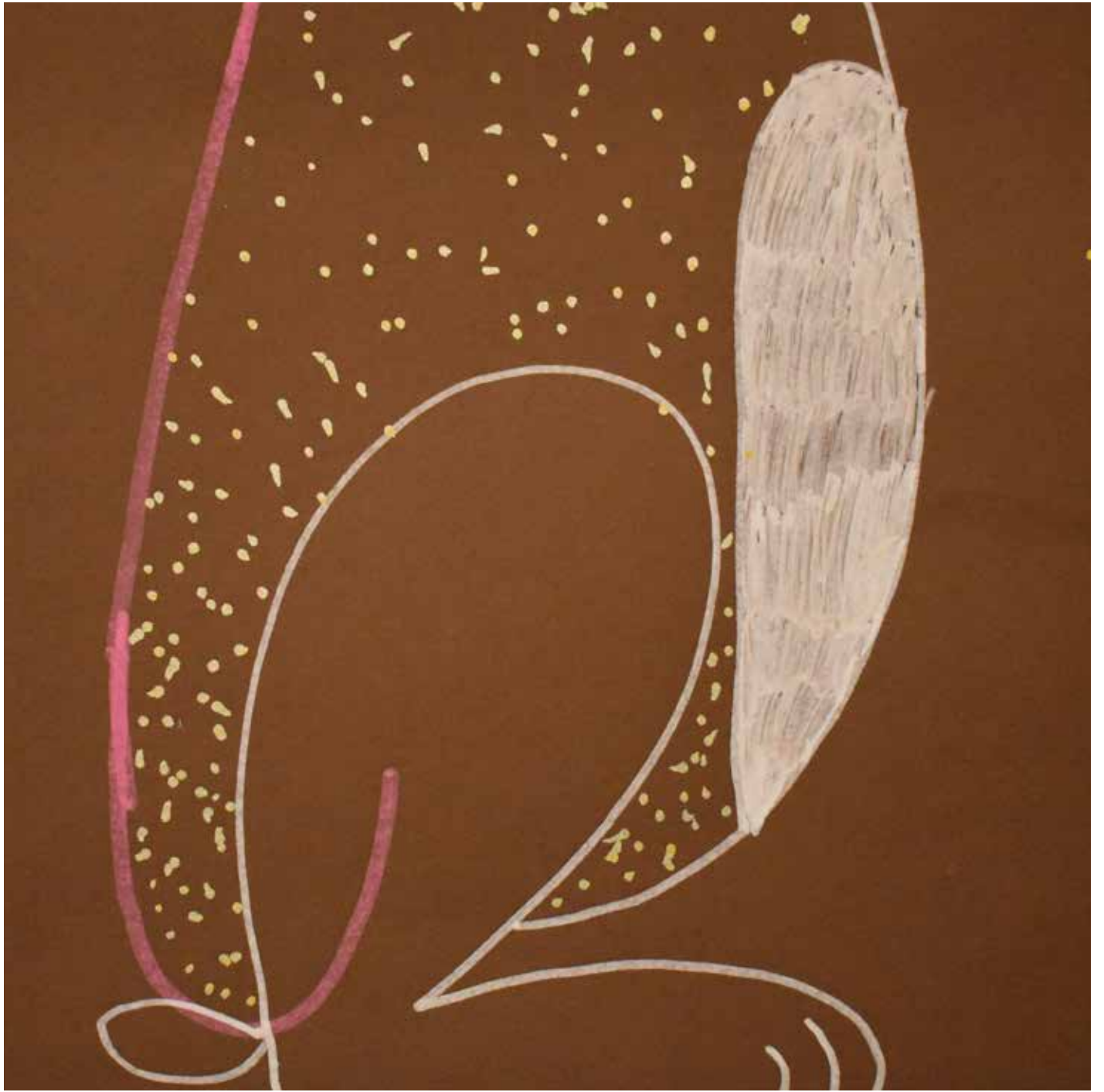




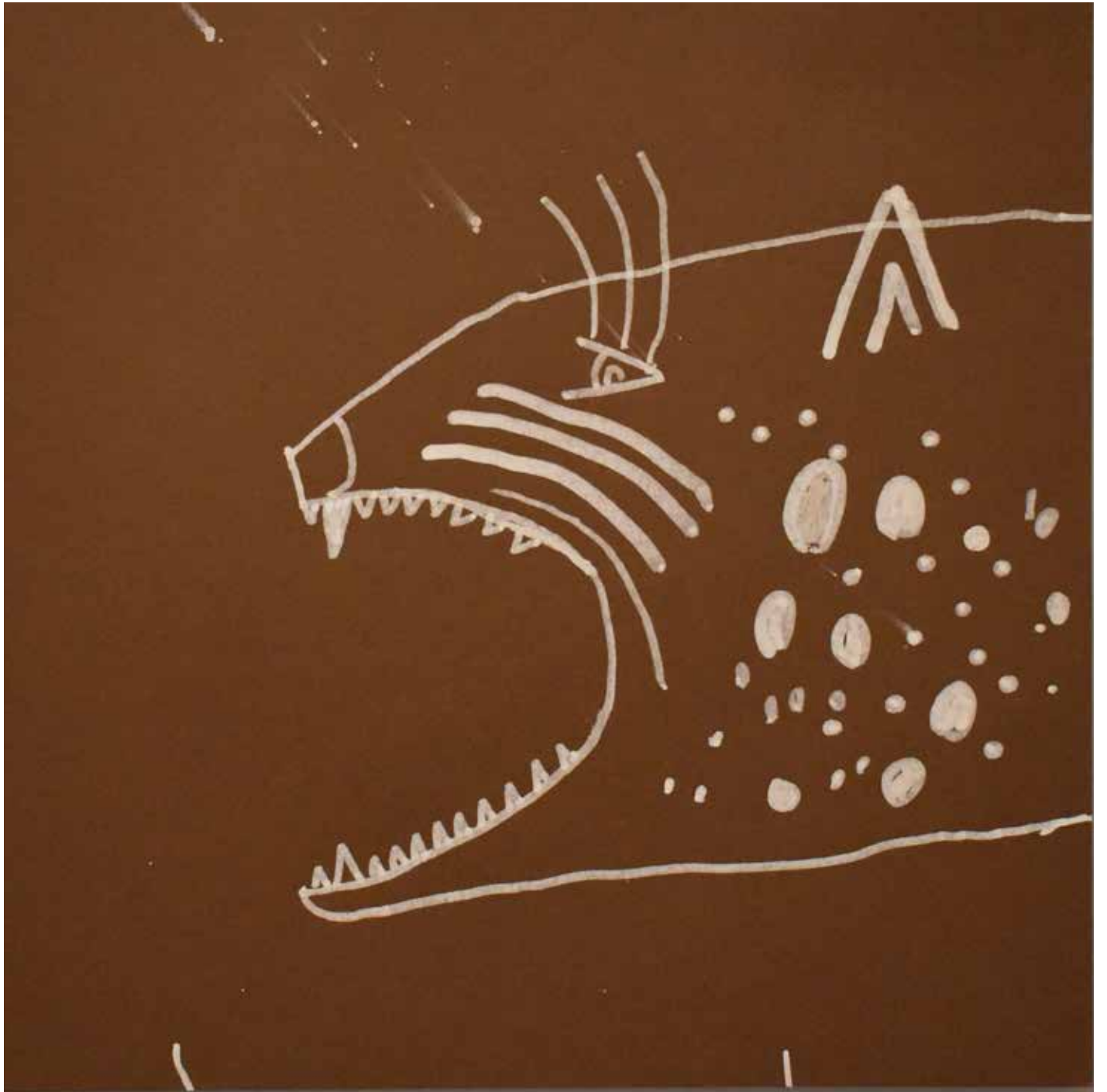




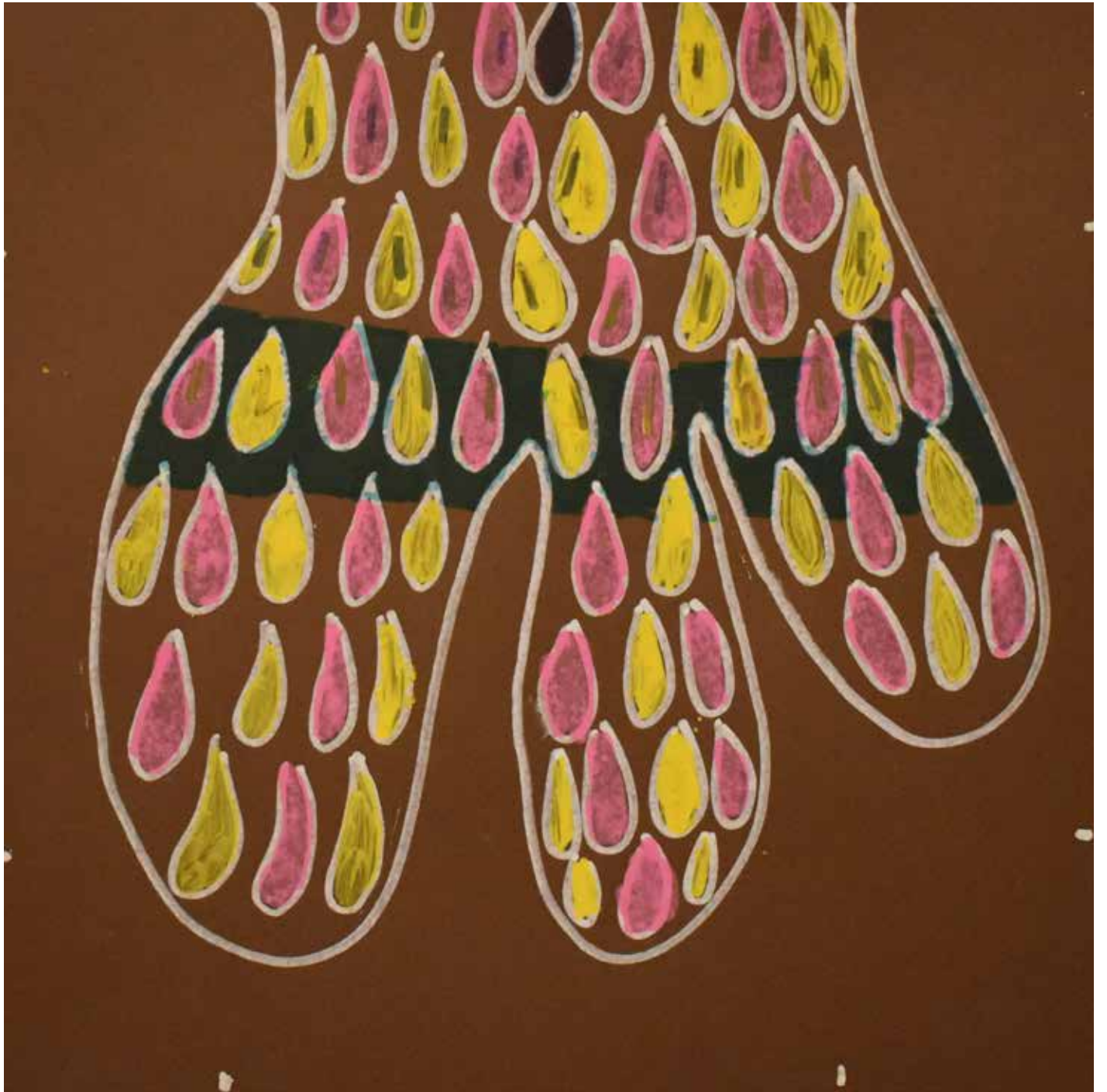


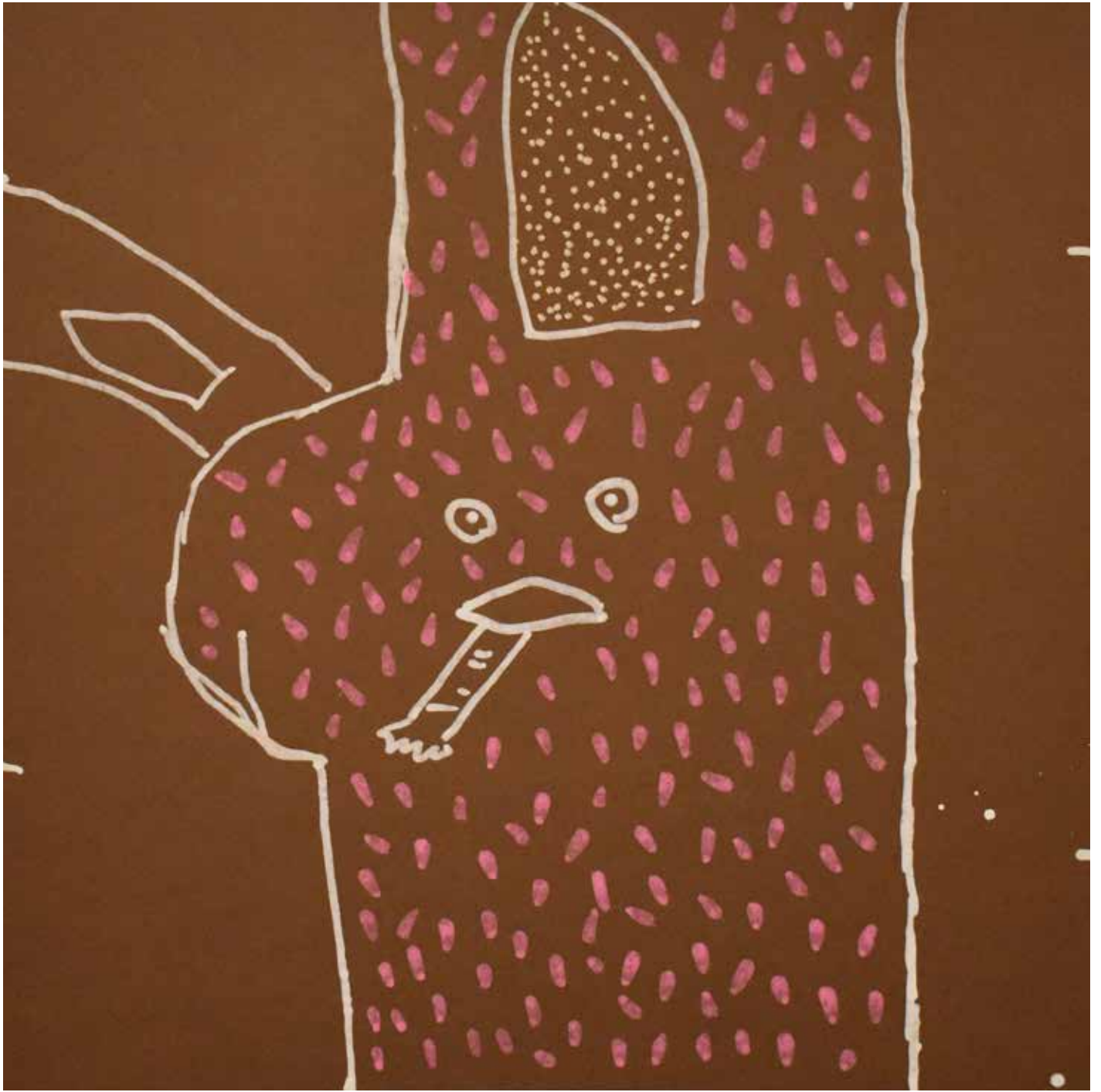


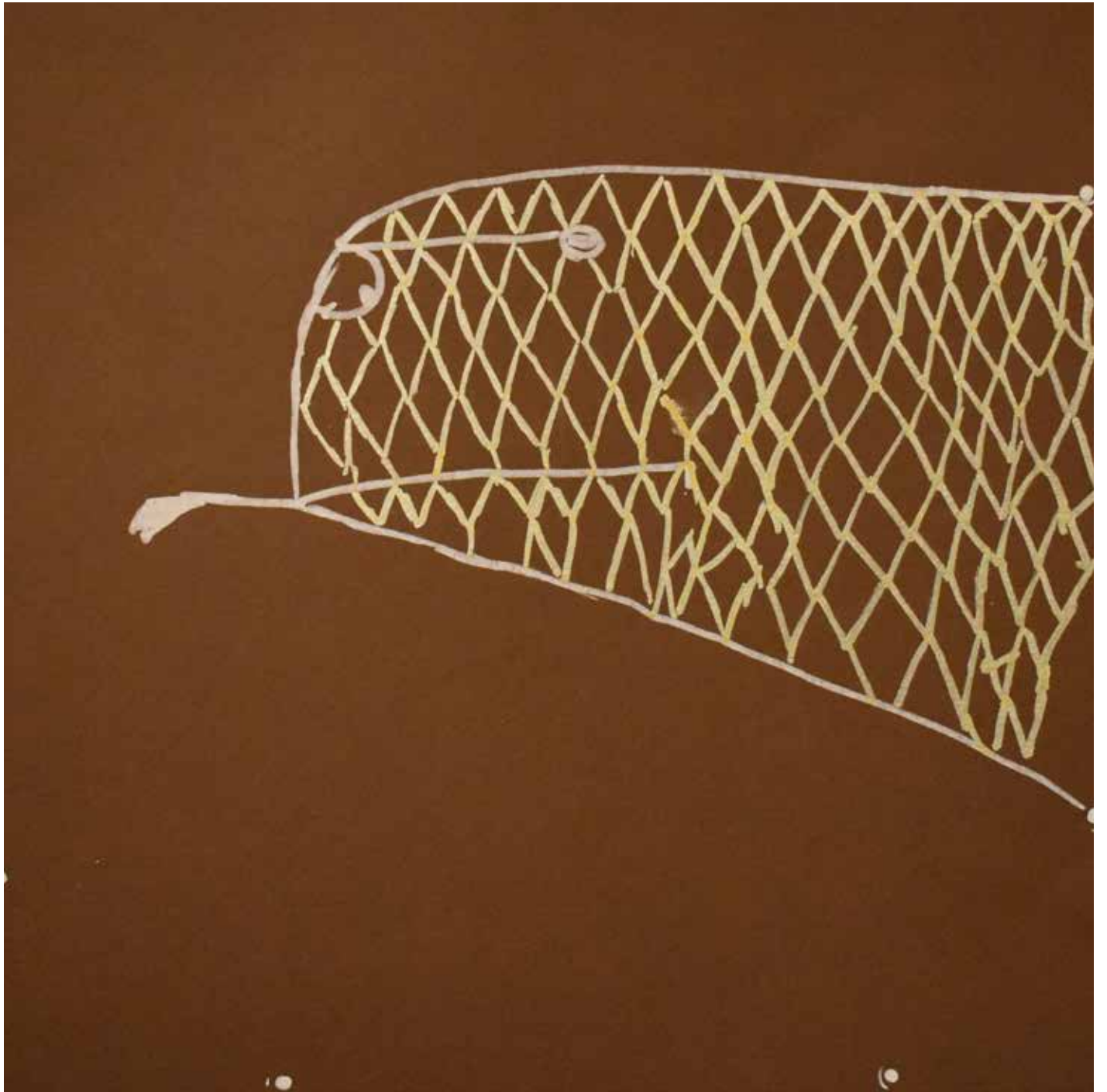


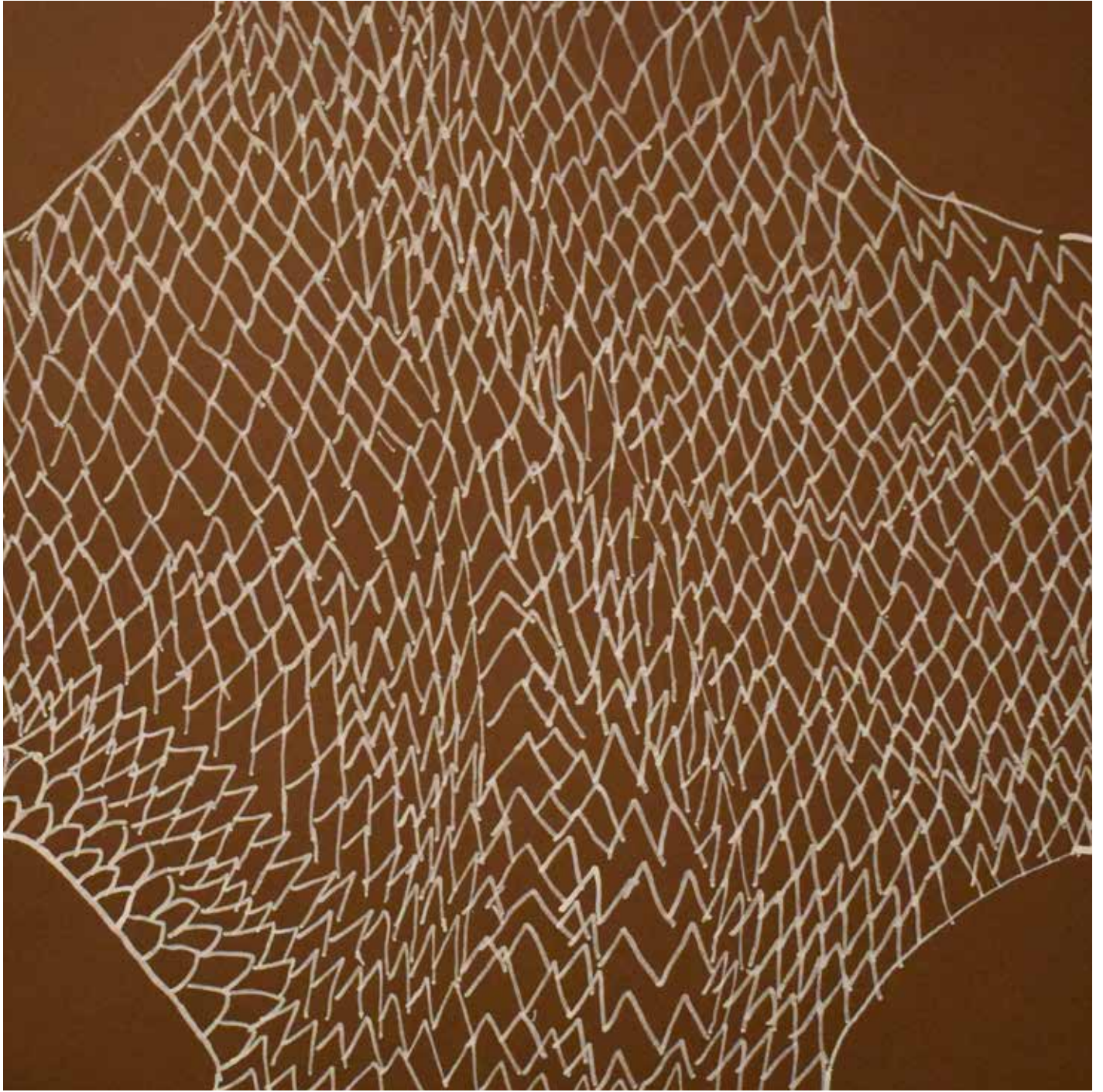


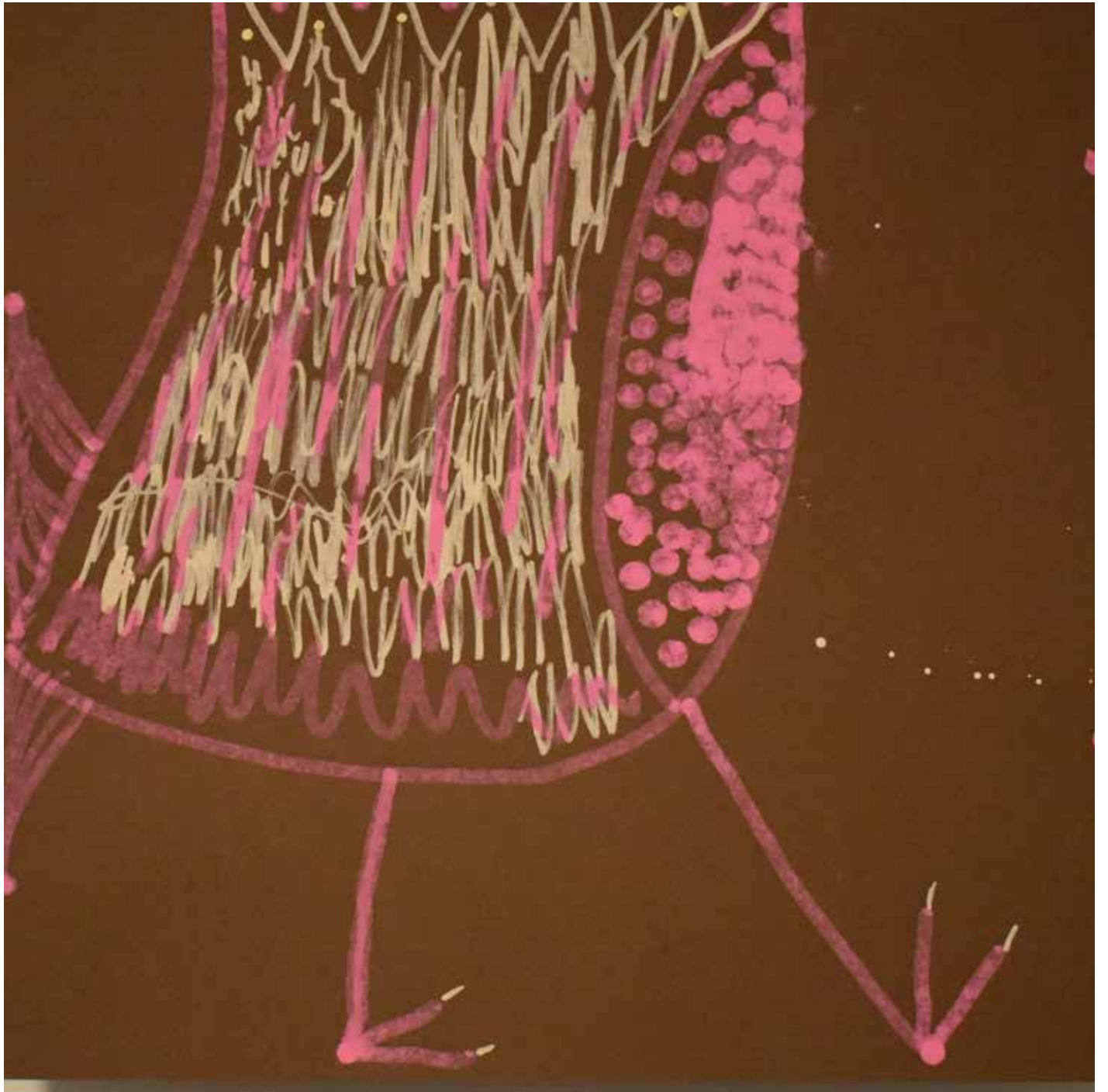






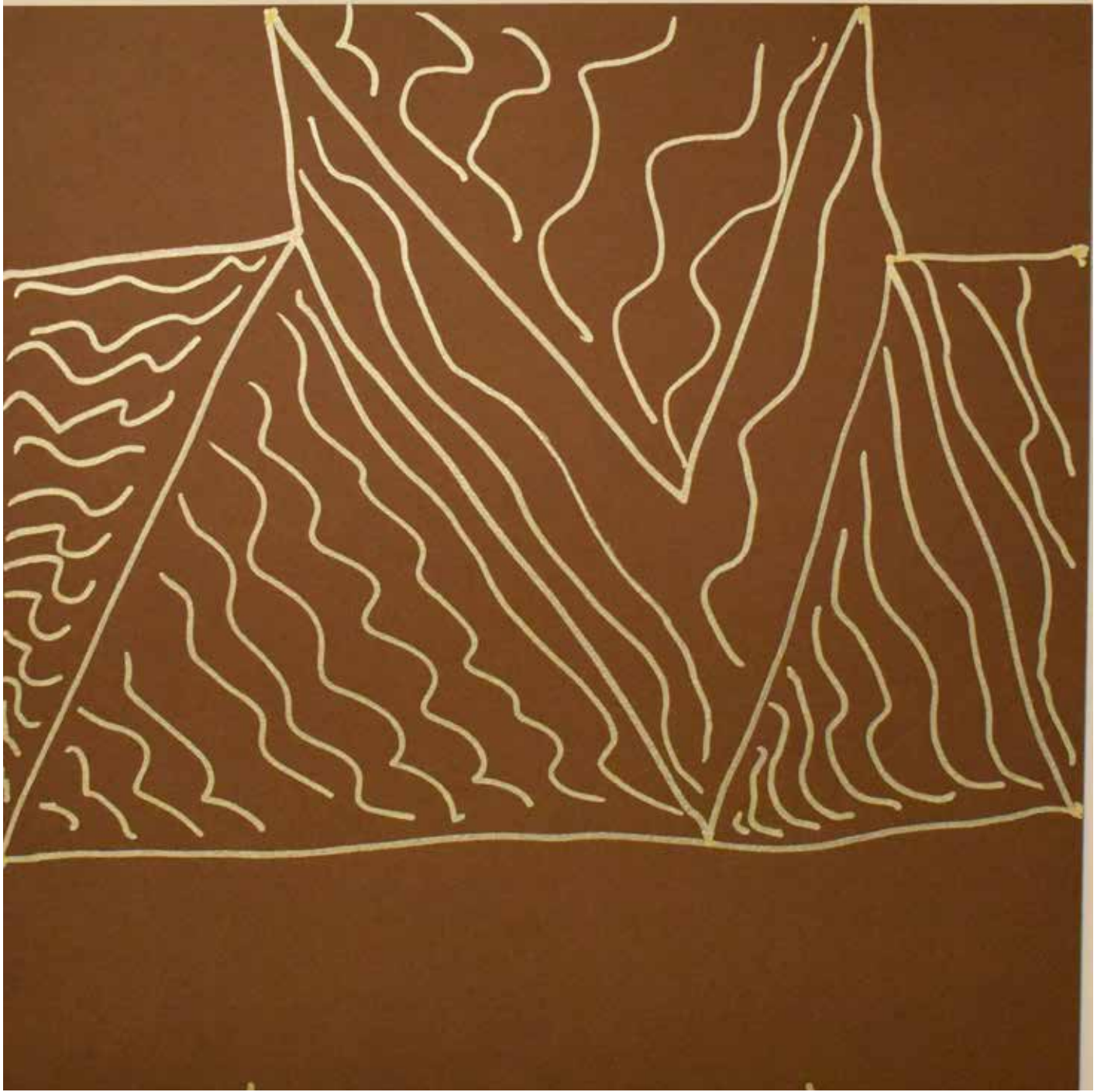










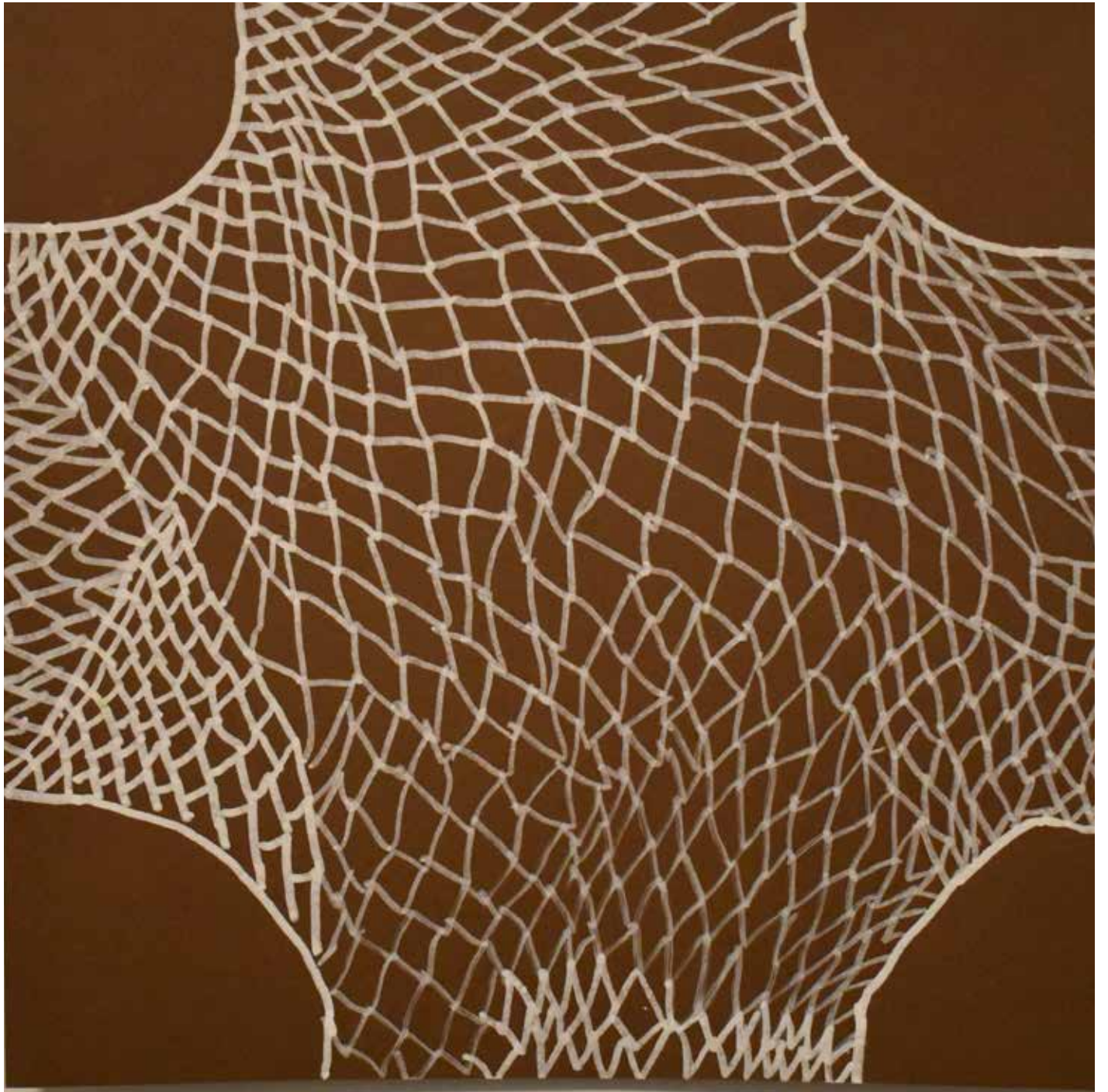


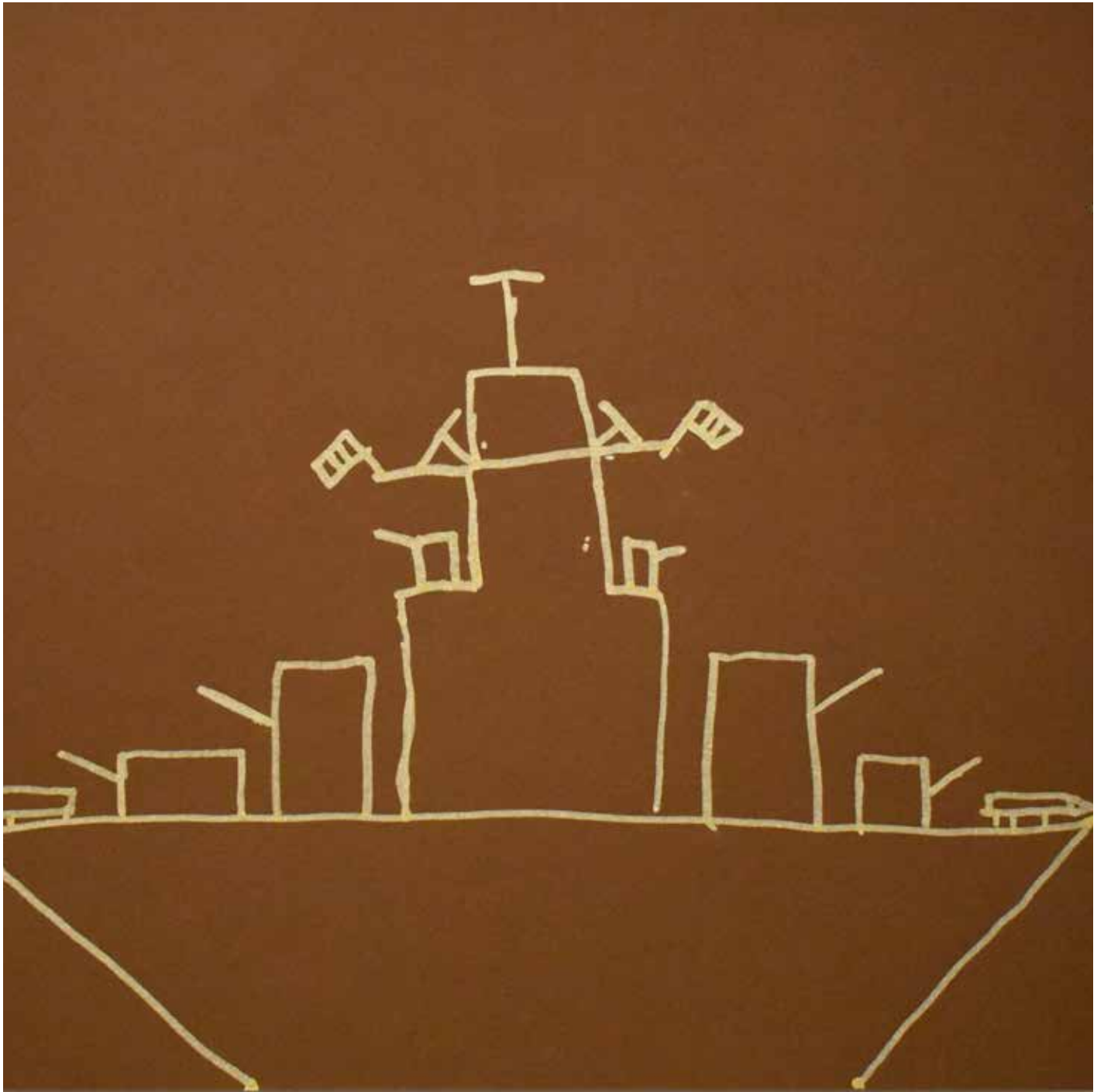




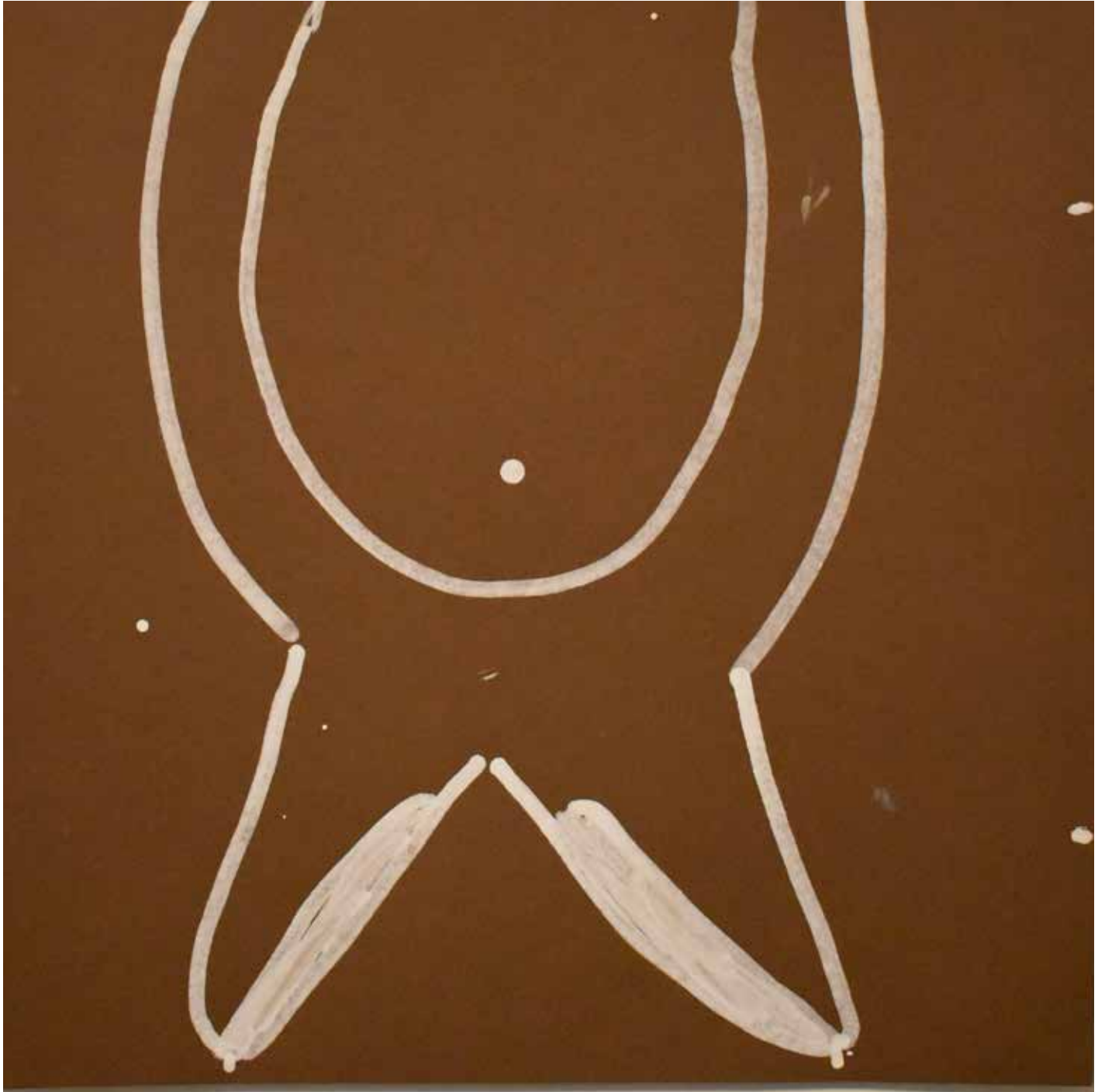




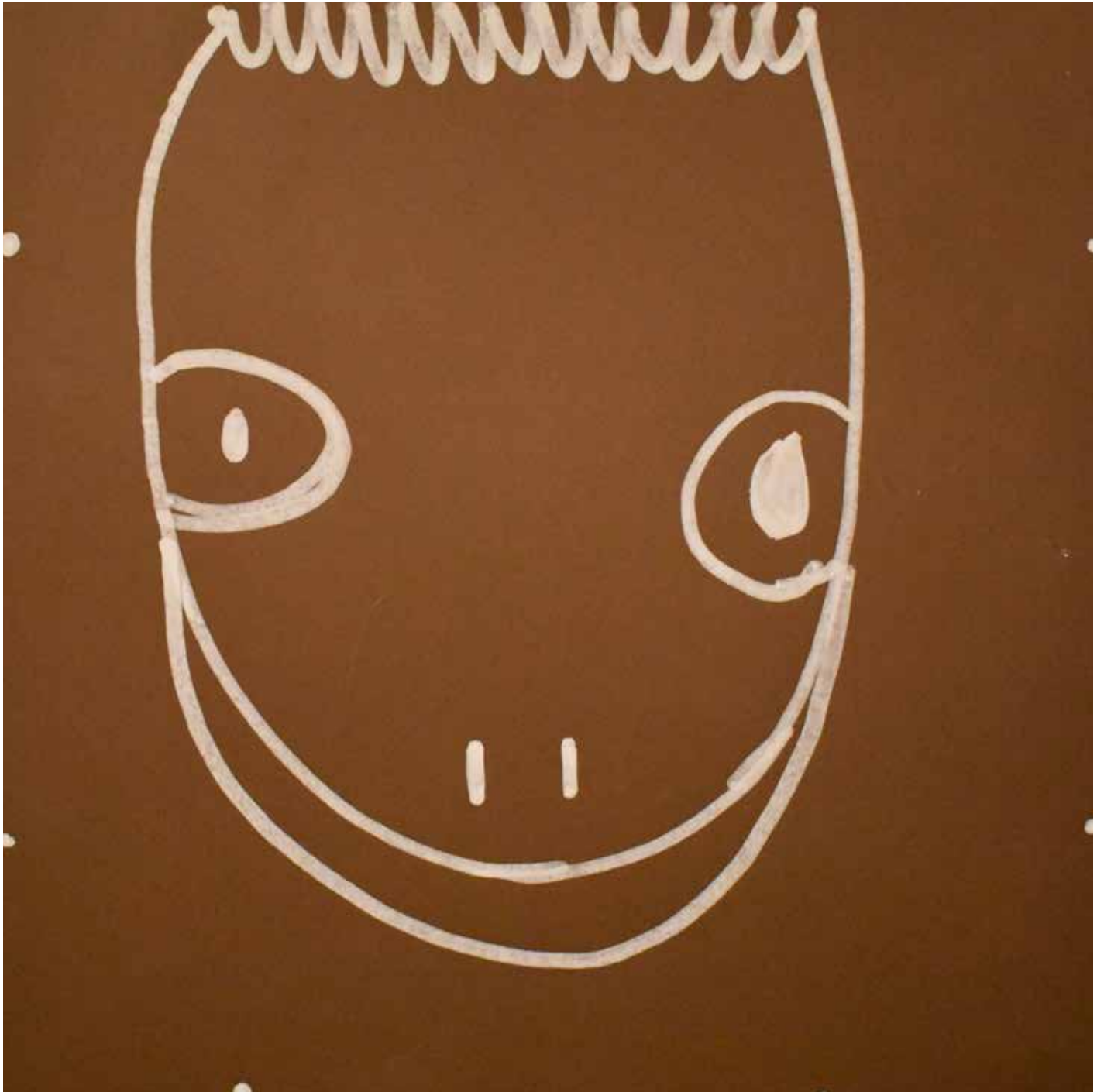


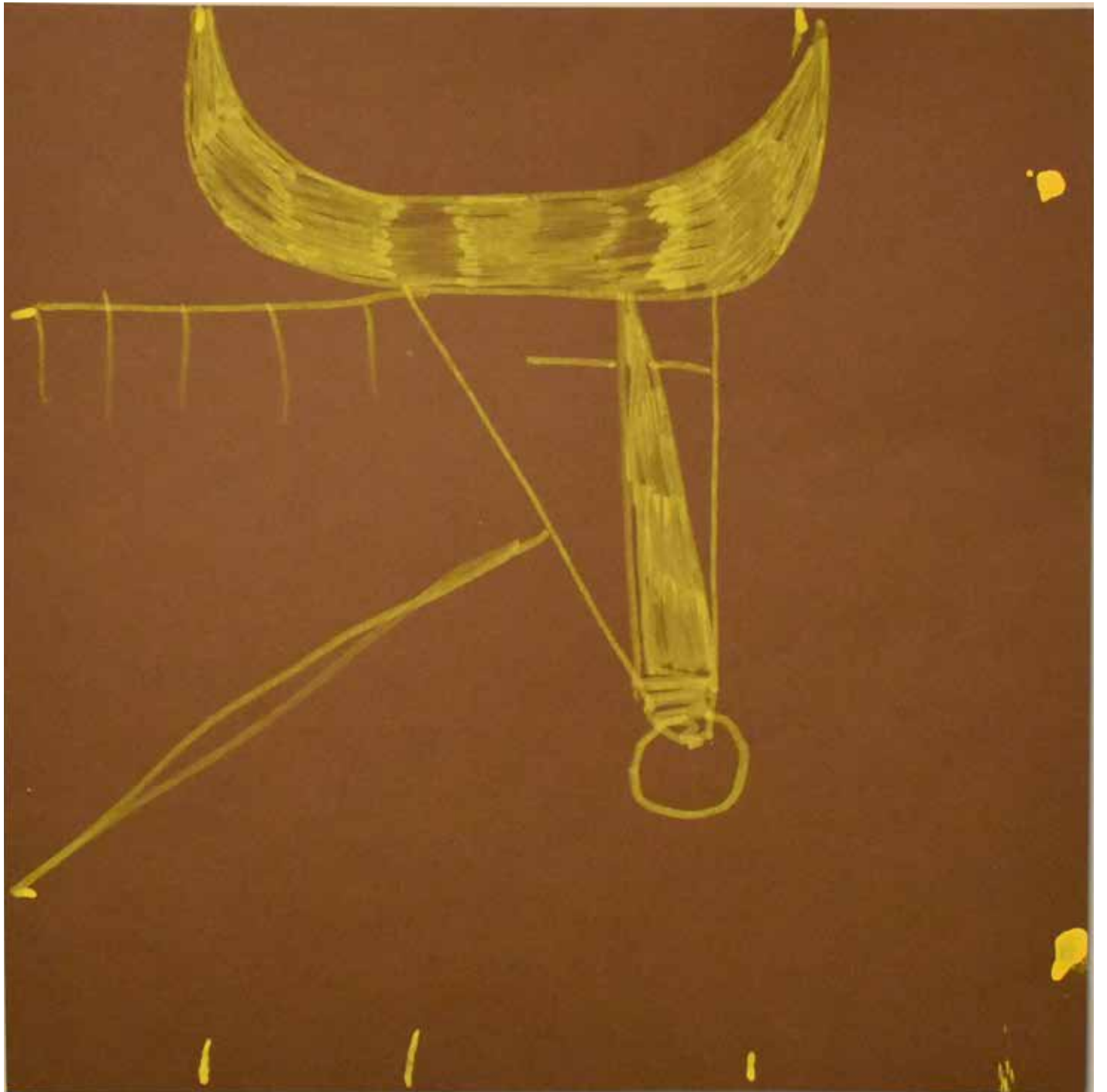
















Progetto realizzato con il contributo del
 Dipartimento
per le politiche della famiglia
Presidenza del Consiglio dei ministri